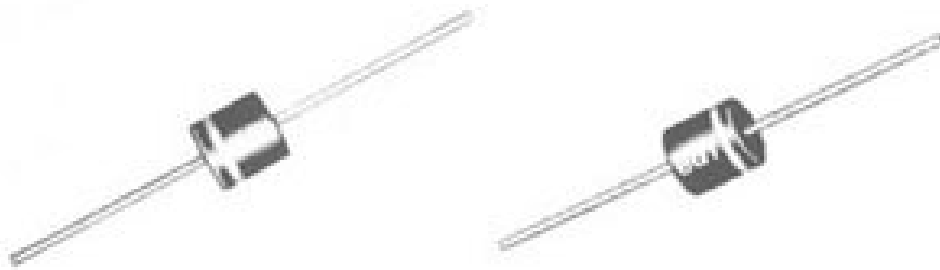




# 3RUS2 3RUS4

HIGH VOLTAGE, HIGH CURRENT  
ULTRA-FAST RECOVERY  
SILICON RECTIFIER DIODES



PRV	1200	1500	1800
TYPE	3RUS2120 3RUS4120	3RUS2150 3RUS4150	3RUS2180 3RUS4180

## ELECTRICAL CHARACTERISTICS (at $T_A=25^\circ\text{C}$ Unless Otherwise Specified)

Type	3RUS2	3RUS4
Avg. Rectified Forward Current @ $50^\circ\text{C}$ Amb., $I_o$ (Fig.1)	1.25 Amp	1.50 Amp
Avg. Output Current @ $80^\circ\text{C}$ lead temperature Lead Temp-measured $\frac{3}{8}$ " from body of diode	2.0 Amp	2.5 Amp
Max. Reverse Current @ PRV and $25^\circ\text{C}$ , $I_R$	5 $\mu\text{A}$	5 $\mu\text{A}$
Max. Reverse Current @ PRV and $100^\circ\text{C}$ , $I_R$	50 $\mu\text{A}$ Max	100 $\mu\text{A}$
Max. Forward Voltage Drop @ $25^\circ\text{C}$ , 2.0Amps, $V_F$	4V.	4V.
Max. Peak Surge Current, $I_{FSM}$ (8.3 ms) (Fig.2)	100A	300A
Operating Temp Range	-55 $^\circ\text{C}$ to +150 $^\circ\text{C}$	
Storage Temp Range	-55 $^\circ\text{C}$ to +150 $^\circ\text{C}$	
Reverse Recovery Time, $t_{rr}$	50 nanosec	

**NOTE:**

Maximum lead and terminal temperature for soldering, 3/8 inch from case, 5 seconds at  $250^\circ\text{C}$

EDI reserves the right to change these specifications at any time without notice.

# 3RUS2 3RUS4

FIG.1

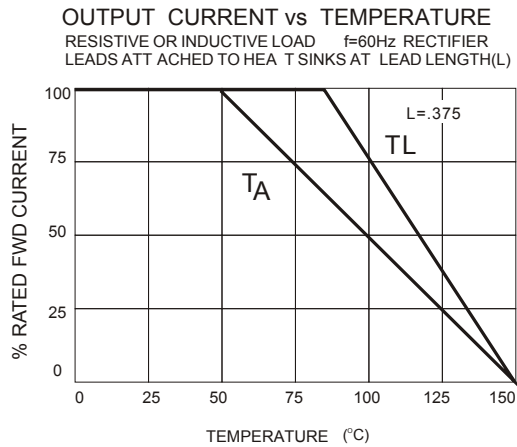


FIG.2

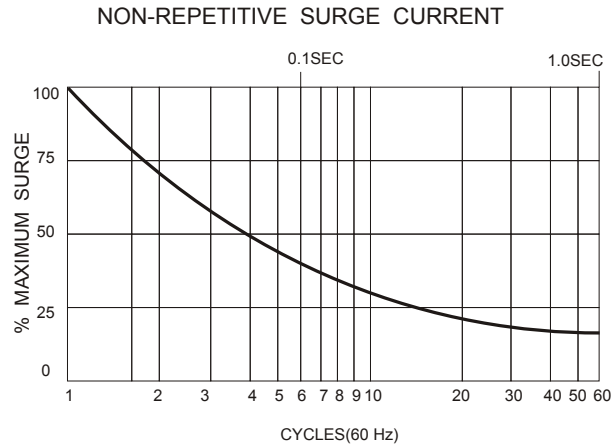
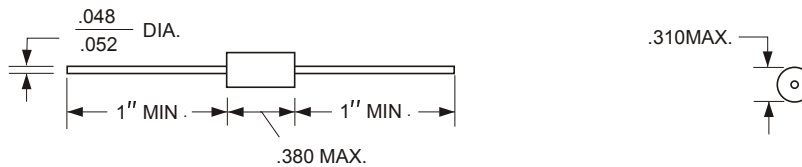


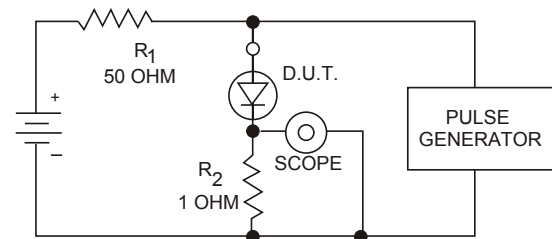
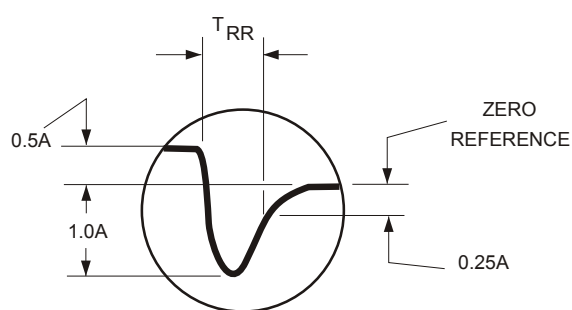
FIG.3  
PACKAGE STYLE



TEST CIRCUIT

FIG.4

TYPICAL REVERSE RECOVERY WAVEFORM



$R_1, R_2$  NON-INDUCTIVE RESISTORS  
PULSE GENERATOR-HEWLETT PACKARD 214A OR EQUIV.  
IKC REP.RATE,  $10 \mu$  SEC. PULSE WIDTH  
ADJUST PULSE AMPLITUDE FOR PEAK  $I_R$

**ELECTRONIC DEVICES, INC.** DESIGNERS AND MANUFACTURERS OF SOLID STATE DEVICES SINCE 1951.

21 GRAY OAKS AVENUE \* YONKERS, NEW YORK 10710 914-965-4400 \* FAX 914-965-5531 \* 1-800-678-0828  
e-mail:sales@eddiodes.com \* website: <http://www.edidiodes.com>