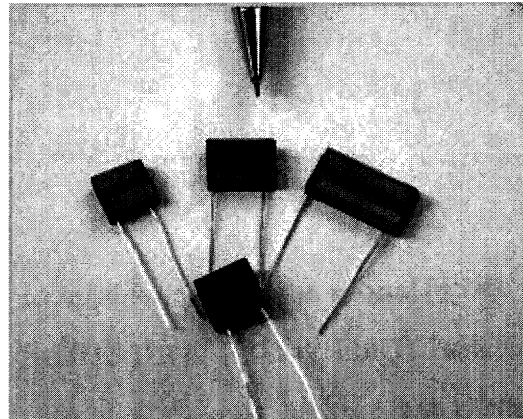




NVM - 4x

NIGHT VISION MULTIPLIERS

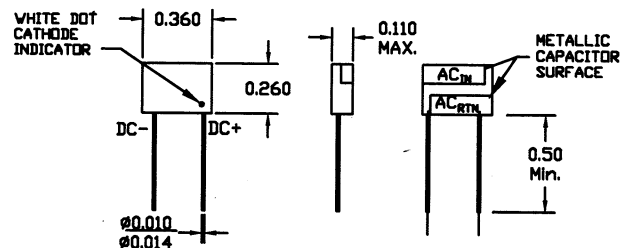
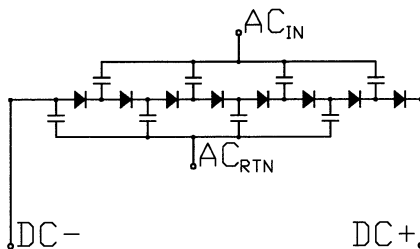


ELECTRICAL CHARACTERISTIC
(at $T_{Air} = 25^{\circ}C$ Unless Otherwise Specified)

NVM - 4x

# of Stages	8
Multiplication Factor	4^*V_{pp}
Peak To Peak Input Voltage, V_{pp}	500V
Peak output voltage	2,000 V dc
Frequency Range	25 - 50 khz Typical
Max. Forward Voltage Drop DC- to DC+ @ 1 mA	32 V
Max AC Input	600 V ac
Operating Temperature, T_o	$-55^{\circ}C$ to $+85^{\circ}C$
Storage Temperature, T_{st}	$-55^{\circ}C$ to $+85^{\circ}C$

NOTES: It is recommended that a device be encapsulated in a thermally conductive insulator to prevent damage from excess heat and electrical arcing.



EDI reserves the right to change these specifications at any time without notice.
ELECTRONIC DEVICES, INC. DESIGNERS AND MANUFACTURERS OF SOLID STATE DEVICES SINCE 1951.
 21 GRAY OAKS AVENUE * YONKERS, NEW YORK 10710 914-965-4400 * FAX 914-965-5531 * 1-800-678-0828
 e-mail:sales@edidiodes.com* website:http:// www.edidiodes.com